



MAG DESIGNS

382 MAIN STREET, SUITE 4-116  
FITCH KILL, N.Y. 12524  
P: (845) 440-3384 F: (845) 440-3350



CARROLL HOUSE - DECK REPLACEMENT  
41 Point Street  
Wappingers Falls, New York 12590

EXTERIOR ELEVATIONS

REVISIONS

COPYRIGHT:  
All design information is the property of MAG DESIGNS. The user agrees to hold MAG DESIGNS harmless for any use of the design information for any purpose other than that for which it was originally intended. The user agrees to indemnify and hold MAG DESIGNS harmless for any and all claims, damages, losses, and expenses, including reasonable attorneys' fees, arising out of or from the use of the design information for any purpose other than that for which it was originally intended.

File: carrollhouse-exterior-elevations.dwg  
Date: 6-20-22 Job: 2240  
Scale: 1/4" = 1'-0"

A100

CONSTRUCTION NOTES:

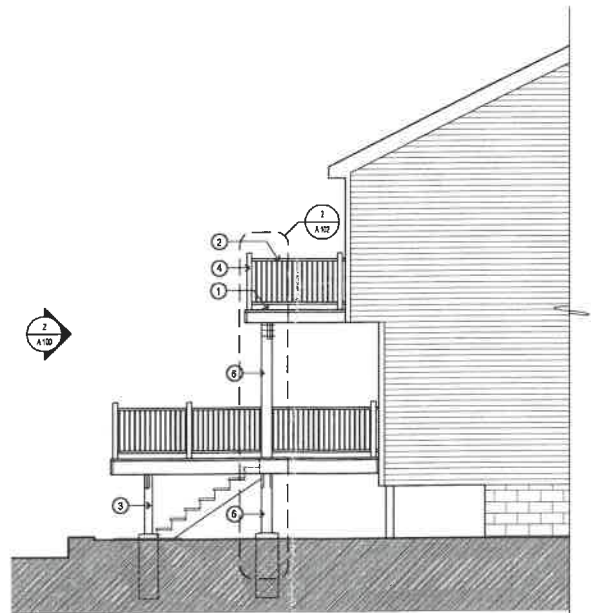
- 1 TREX DECKING - PEBBLE GREY SQUARE EDGE COMPOSITE DECK BOARD MODEL #86601
- 2 TREX EMBRACE 5 FT. x 2.75" x .36" CHARCOAL BLACK COMPOSITE DECK RAIL KIT ROUND BALL STRAPES MODEL #880066MKNR7. INSTALL AS PER MANUFACTURER'S SPECIFICATIONS.
- 3 P.T. 6 x 8 P.T. WOOD POST. W/ 1" SONOTUBE FILLED W/ CONCRETE SEE DETAIL.
- 4 4 x 4 P.T. WD. POST W/ 1/2" DIA. SONOTUBE
- 5 P.T. STAIRS - VERIFY IN FIELD QUANTITY OF STEPS REQUIRED. SHOWN - 6 STEPS @ 7" RISE 11'-0" RUN. SEE FRAMING PLAN FOR FRAMING INFO.
- 6 P.T. 8 x 8 P.T. WOOD POST. W/ 1" SONOTUBE FILLED W/ CONCRETE SEE DETAIL.



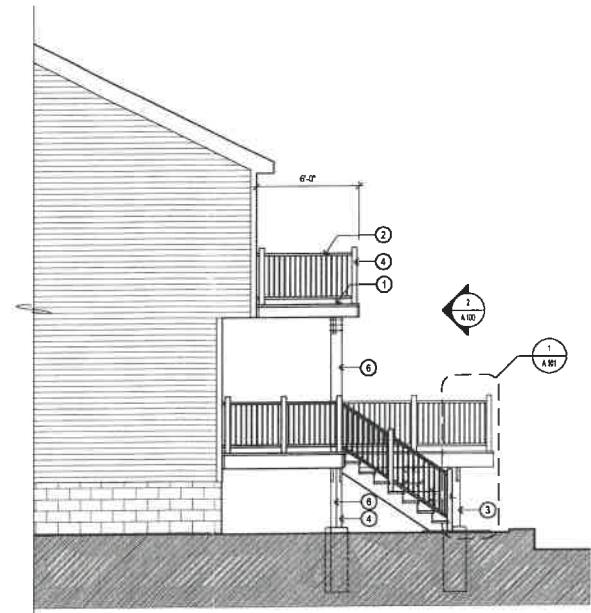
1 EXISTING CONDITIONS  
SCALE: 1/4"=1'-0"



2 PROPOSED DECK - WEST ELEVATION  
SCALE: 1/4"=1'-0"



3 PROPOSED DECK - SOUTH ELEVATION  
SCALE: 1/4"=1'-0"



4 PROPOSED DECK - NORTH ELEVATION  
SCALE: 1/4"=1'-0"